



**BEST EVENTS**  
C A T E R I N G

# RENTALS CATALOG

— 2022 —



608.755.4123

[WWW.BESTEVENSCATERING.COM](http://WWW.BESTEVENSCATERING.COM)



Photo by Birchwood Studios

## TABLES & SEATING

### TABLES



#### Round Tables

5' | Seats 8 | \$15.50  
6' | Seats 10 | \$16.50



#### Folding Banquet Tables

6' x 30" | Seats 6 | \$11.50  
8' x 30" | Seats 8 | \$11.50



#### Plastic Folding Picnic Tables

6' | Seats 8 | \$25.00



#### Stand Up Cocktail Tables

30" Top | \$14.50



#### Sit Down Bistro Tables

36" Top | Seats 4 | \$14.50



#### Rolling Port-A-Bar

Collapsible, includes a built in ice well  
\$95.00



#### White Wash Bar

(Picture shows two)  
\$150.00

### CHAIRS



#### Seashell White

Folding Metal Chair  
\$3.50



#### White Folding Resin Chair

with Padded Seat  
\$4.50



#### Standard Banquet Chair

with Metal Rim  
(Fits all Chair Covers)  
\$6.00



#### Farm Chairs

\$9.00  
Limited Availability



#### High Chair

\$8.00



#### Booster Seats

\$3.00

ALL ORDERS HAVE DELIVERY AND PICKUP FEES BASED ON LOCATION





Photo by Megan O'Leary

# LINENS

## POLYESTER

\* Availability based on in-stock linens only. Some colors only available through Fall 2022. All linen rentals subject to linen deposit.

- 72" x 72" Square \$10.95
- 90" Round \$12.95
- 108" Round \$15.95
- 60" x 120" Rectangular \$18.95
- 120" Round \$16.95
- 132" Round \$18.95
- 90" x 156" Rectangular \$19.95

Maize	Lemon	Burnt Orange	Pumpkin	Orange	Terra Cotta	Burgundy	Cherry Red	Red	Ruby
Fuchsia	Hot Pink	Neon Pink	Watermelon	Pink	Light Pink	Dusty Rose	Coral	Peach	Amethyst
Periwinkle	Purple	Plum	Eggplant	Powder Blue	Light Blue	Turquoise	Slate	Royal	Navy
Jade	Aqua	Teal	Forest	Hunter	Olive	Light Olive	Kelly	Lime	Celadon
Mint	Clover								

### LINENS SIZING GUIDELINES

- 90" Round (covers 3' table to floor)
- 108" Round (covers 4' round tables to floor)
- 60" x 120" Rectangular (covers 6' and 8' banquet tables)
- 90" x 156" Rectangular (covers 8' banquet tables to floor)
- 120" Round (covers 5' tables to floor or cocktail table \*no synch)
- 132" Round (covers 6' tables to floor or cocktail table with synch)
- 72" x 72" Square Linens (covers 4' and 5' round tables)

ALL ORDERS HAVE DELIVERY AND PICKUP FEES BASED ON LOCATION

# LINENS

\* Availability based on in-stock linens only. Some colors only available through Fall 2022. All linen rentals subject to linen deposit.

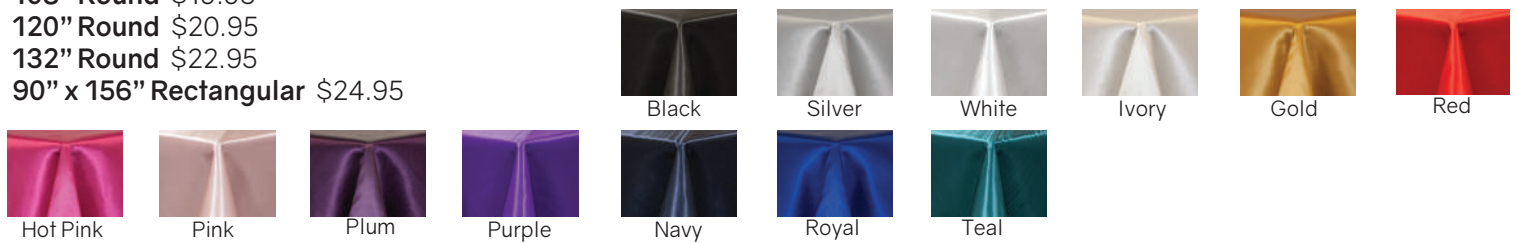
## LAMOUR MATTE SATIN

**120" Round** \$22.95  
**90" x 156" Rectangular** \$24.95



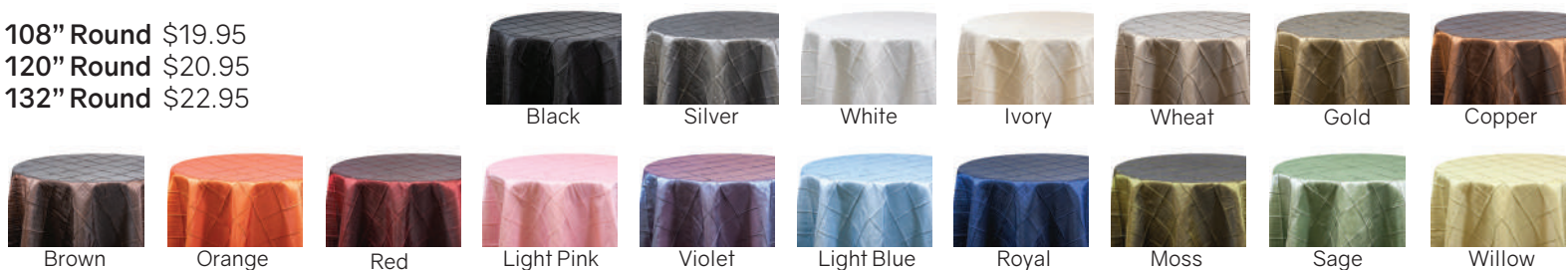
## POLY SATIN

**108" Round** \$19.95  
**120" Round** \$20.95  
**132" Round** \$22.95  
**90" x 156" Rectangular** \$24.95



## PINTUCK

**108" Round** \$19.95  
**120" Round** \$20.95  
**132" Round** \$22.95



## IRIDESCENT CRUSH

**72" x 72" Square** \$12.95  
**108" Round** \$16.95  
**120" Round** \$18.95  
**132" Round** \$20.95



ALL ORDERS HAVE DELIVERY AND PICKUP FEES BASED ON LOCATION



# NAPKINS AND TABLE RUNNERS

\* Availability based on in-stock linens only. Some colors only available through Fall 2022. All linen rentals subject to linen deposit.

## NAPKINS

\* Same colors as listed for table linens.

- 20" x 20" Polyester \$1.00
- 20" x 20" Pintuck \$1.50
- 20" x 20" Satin \$1.80
- 20" x 20" Matte Satin \$1.95
- 20" x 20" Iridescent Crush \$1.95
- 20" x 20" Faux Burlap \$1.75
- 20" x 20" Gingham \$1.75

## TABLE RUNNERS

\* Same colors as listed for table linens.

- 13" x 120" Polyester \$7.50
- 13" x 120" Pintuck \$8.50
- 13" x 120" Satin \$8.50
- 13" x 120" Iridescent Crush \$8.50
- 13" x 120" Lace \$8.50
- 13" x 120" Faux Burlap \$15.00
- 13" x 120" Matte Satin \$15.00
- 13" x 120" Sequin \$18.95

## OVERLAYS

\* Same colors as listed for table linens.

- 72" x 72" White Lace \$12.95
- 72" x 72" Ivory Lace \$12.95

## CHAIR ACCESSORIES

\* Limited availability



**Fitted Polyester Chair Cover**  
White | Ivory | Brown | Khaki  
Fits on standard banquet chairs  
\$5.00



**Satin Chair Cover**  
White | Ivory | Black | Gold | Silver  
\$5.00



**Ruched Chair Cover**  
White | Ivory | Black | Gray | Champagne  
Fits on non-standard chairs  
\$5.00



**Satin Chair Bags**  
White | Ivory | Black | Silver | Champagne  
Fits on non-standard chairs  
\$5.00



**Colored Polyester Chair Tie**  
\$1.25



**Faux Burlap Chair Tie**  
\$2.35



**Colored Pintuck Chair Tie**  
\$1.95



**Colored Iridescent Crush Chair Tie**  
\$2.25



**Lace Chair Tie**  
White | Ivory  
\$2.30



# SERVING EQUIPMENT

## SET THE TABLE

*\*Only available when using our catering services.*

**Dinner China Service :** Includes Dinner Plate, Salad Plate, Coffee Cup and Saucer, Fork, Knife, Spoon. Steak Knife if applicable.

**Limited China Service:** Includes Dinner Plate, Fork, Knife, Spoon. All cups and smaller plates will be paper or plastic. Styrofoam upgrades are available.

**Hors d'oeuvres Service :** Includes Plates, Forks in baskets, Cocktail Picks in Wine Glasses, & Cocktail Napkins



### CASSANDRA CHINA

**Dinner China Service | \$5.95**

**Limited China Service | \$4.95**

**Hors d'oeuvres | \$3.95**

10 1/2" Dinner Plate | 1.50

7 1/2" Salad Plate | 1.25

Glass Dessert Plate | 1.00

Coffee Cup 8oz | .75

Coffee Saucer | .60



### Flatware with Design

Fork, Knife or Spoon | .50 each

Steak Knives | .60 each



### 1 Liter Plastic Water Carafe

\$2.50



### 10.5 oz Ice Water Glass

\$.75



### 7.5 oz Wine Glass

\$.75



### 5 oz Fluted Champagne Glass

\$.85



### 8 oz Cocktail Lo-ball Glass

\$.80



### 10 oz Cocktail Hi-ball Glass

\$.80

## HOT AND COLD

*\*All chafers come complete with liner pan, hotel pan, and 2 canned heat (Sternos). Sternos will keep hot foods at serving temperatures for approx. 2 hours.*



### 12 1/2" x 20 1/2" Rectangular Chafer

\$20.00

(with accessories)

Extra Sternos \$1.95/each



### Beverage Troughs

Available in 3ft, 6ft, and 8ft sizes

\$30.00



### Fill & Chill Table

(includes plug)

4' x 30" | \$45.00

6' x 30" | \$45.00



### Ice Bags

20 lbs. | \$7.50 each

**ALL ORDERS HAVE DELIVERY AND PICKUP FEES BASED ON LOCATION**





Photo by Megan O'Leary

# PIPE & DRAPE

## PIPE AND DRAPE



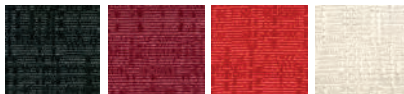
**8 Foot Tall Pipe and Drape** | \$3.50 per linear foot  
**3 Foot Tall Pipe and Drape** | \$3.00 per linear foot  
 Expandable cross bar: 6 Feet, 8 Feet or 10 Feet



**Extendable Pipe and Drape**  
 (up to 16' tall)  
 \$7.50 per linear foot  
 \*Only available in black drape



**16' Tall Sheer Voile**  
 \$8.50/ ft additional  
 White | Ivory | Dusty Rose | Pink | Black | Silver | Gold



**8' Tall Expo Drape**  
 Black | Burgundy | Red | White

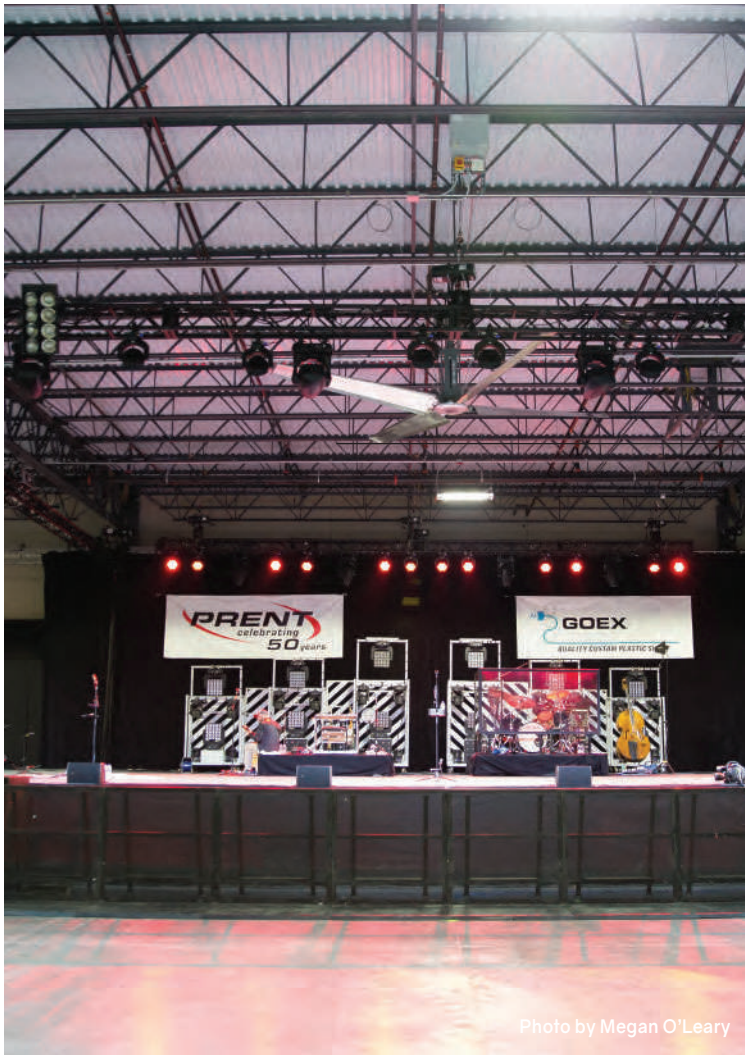


Photo by Megan O'Leary

**DELIVERY CHARGES MAY APPLY**

# DELIVERY FEES

RENTAL  
PICKUP  
ALSO  
AVAILABLE!

Janesville \$35.00	Beloit \$35.00	Milton \$42.50	Evansville \$50.00	Edgerton \$45.00	Delavan/ Darien \$50.00	Stoughton \$65.00	
Roscoe \$65.00	Rockford \$75.00	Footville \$50.00	Orfordville \$65.00	Clinton \$65.00	Whitewater \$95.00	Newville \$45.00	Fort Atkinson \$50.00

16% Labor and Delivery Fee for any non-standard deliveries or locations. State and local taxes apply.

ALL ORDERS: Delivery and return pickup fee will apply.

Equipment Pick Up Fee: Pick up fees are applied at the delivery fee charge.

Same Night Pick Up: Add \$125.00 (as available).



## IT ALL BEGAN IN 1986

For more than 35 years Best Events has provided the Stateline Area with quality rental items. Best Event's inventory includes everything you need to get the party started including tables, chairs, linens and so much more. Our event planners are here to assist you in choosing the right items for your event, no matter how big or small. We can't wait to help you celebrate!

— Thank You for Choosing Best Events —



## BEST EVENTS IS A DIVISION OF KANDU INDUSTRIES

When you choose Best Events, you are supporting the KANDU mission. KANDU Industries is a 501(c)(3) organization that provides opportunities to people with disabilities and disadvantages. For almost 60 years, these work, social, and daily activities enable KANDU clients to achieve their maximum potential and enjoy the dignity of being productive citizens.